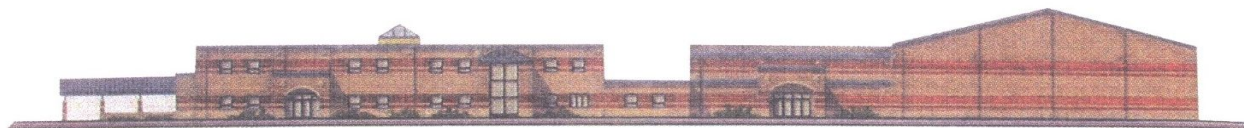


JONESVILLE COMMUNITY SCHOOLS

115 East St. · Jonesville, MI 49250 · Phone 517-849-9075 · Fax 517-849-2434



Committed To Educational Progress

April 12, 2019

Dear Parents and Community Members:

We are pleased to present you with the Annual Education Report (AER), which provides key information on the 2017-18 educational progress for Jonesville Middle School. The AER addresses the complex reporting information required by federal and state laws. The school's report contains information about student assessment, accountability and teacher quality. If you have any questions about the AER, please contact Mr. Eric Swihart, Principal, at 517-849-3210 or by email eswihart@jonesvilleschools.org for assistance.

The AER is available for you to review electronically by visiting jonesvilleschools.org or you may review a copy in the principal's office at your child's school.

For the 2017-18 school year, schools were identified using new definitions and labels as required in the Every Student Succeeds Act (ESSA). A Targeted Support and Improvement (TSI) school is one that has at least one underperforming student subgroup. An Additional Targeted Support (ATS) school is one that has three or more underperforming student subgroups. A Comprehensive Support and Improvement (CSI) school is one whose performance is in the lowest 5% of all schools in the state. Some schools are not identified with any of these labels. In these cases, no label is given.

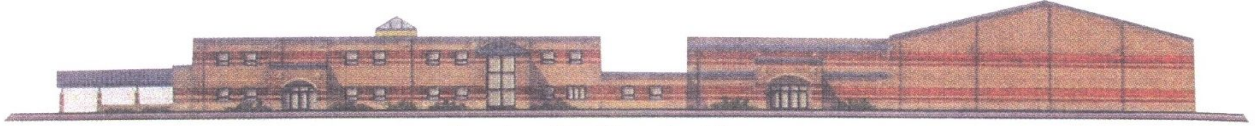
Our school was not given one of these labels.

One key challenge facing Jonesville Middle School is the M-STEP State Assessment. Although, JMS has fallen below State averages in many areas of the M-STEP, the staff of JMS has worked diligently to review data and collaborate for continued improvement and has seen gains in recent years. Teachers and other staff will continue to strive for excellence and work to make continual progress while still providing a well-rounded educational experience for all of our students. While we believe standardized test scores are important, they are not the only indicators in examining and evaluating our students' educational growth and the quality of our school.

The students of Jonesville Middle School are district and school of choice students in sixth through eighth grades. Jonesville Community School District has a regional reputation for being a quality school district. The large number of open-enrolled students within our buildings speaks volumes of our competent and caring faculty and staff, the facilities provided to our students, and the curricular and extra-curricular opportunities we provide. These core components are the basis for our recognition and reputation within our area.

JONESVILLE COMMUNITY SCHOOLS

115 East St. · Jonesville, MI 49250 · Phone 517-849-9075 · Fax 517-849-2434



Committed To Educational Progress

Our School Improvement Plan is focused on the implementation of PBIS (Positive Behavior Intervention & Supports) as well as areas focused on reading and vocabulary, parent involvement and school climate & culture. The JMS School Improvement Team includes a teacher from each core subject area as well as enhancement areas. The focus of our team is to create achievable goals that also fall in line with the elementary and high school in our district. Data is collected annually to gauge our accomplishments. Adjustments are made in our professional development, lesson planning and classroom materials to further accomplish these goals.

The Michigan Department of Education has a recommended academic core curriculum, including benchmarks and standards, for all students. The Jonesville Middle School faculty has aligned its core curriculum with the Common Core State Standards in language arts and math, the Next Generation Science Standards, and the Michigan Grade Level Content Expectations in social studies. Grade level alignment information is available from each classroom teacher. In addition to the core subjects, band/music, art, physical education, computers, industrial arts, psychology, and health are offered to our students. Each of these offerings is also aligned to state and/or national standards.

During the 2017-18 school year, two Parent/Teacher Conference Nights were held in the fall, with one night scheduled in the winter and spring. Parent/Teacher Conferences were intentionally scheduled to be held during each trimester (Fall/Winter/Spring) of the 2017-18 school year. The attendance rate for our conferences are as follows: First Trimester (Fall) – 43%, Second Trimester (Winter) – 32%, and Third Trimester (Spring) – 29%.

JMS will continue pursuing new academic and extra-curricular opportunities for our students. Continued development of Outdoor Adventures programming and outside clubs will continue to be a focus to help provide our students with a well-rounded education. Thank you for choosing Jonesville Middle School as your school of choice!

Sincerely,

Eric Swihart
Principal, Jonesville Middle School